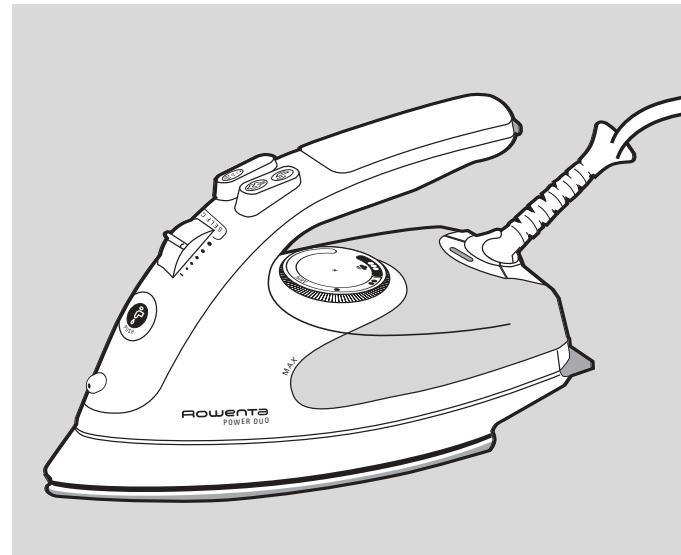


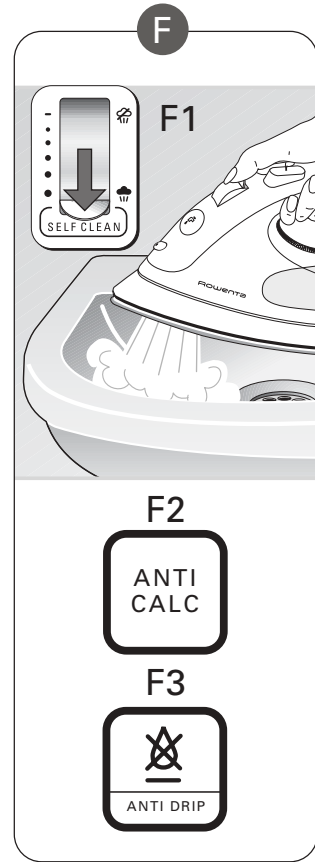
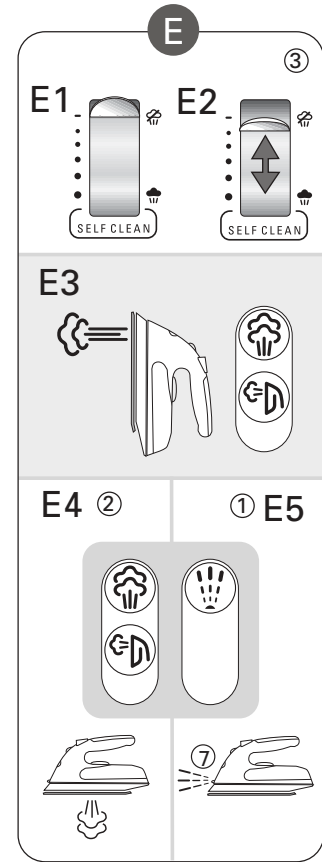
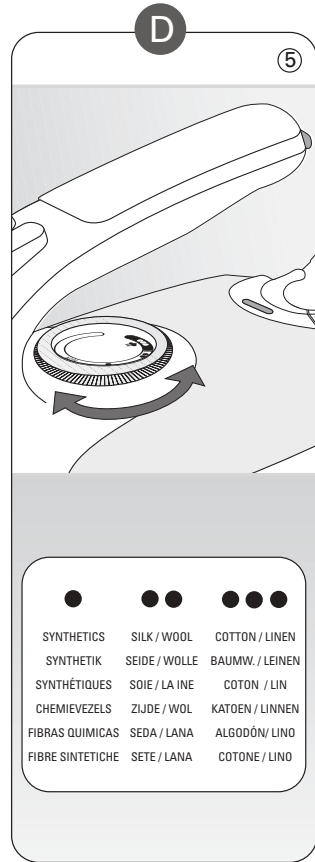
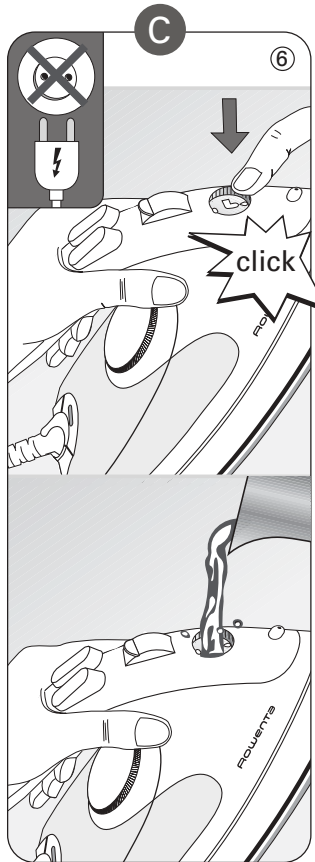
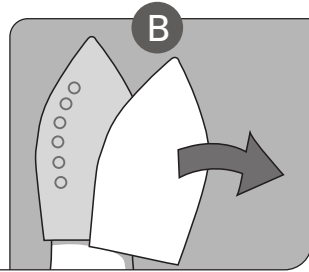
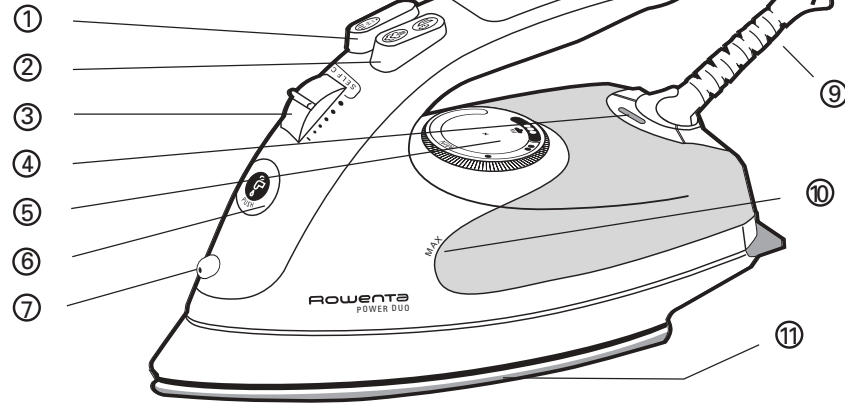
Rowenta

POWER DUO



GB	Please read carefully the instructions for use and the Safety Points to Note. Pay particular attention to the fold-out page with the illustrations.	page 1
D	Bitte lesen Sie diese Gebrauchsanweisung und die Sicherheitshinweise aufmerksam durch. Beachten Sie dabei die Abbildungen auf der ausklappbaren Bildseite.	Seite 6
F	Lire attentivement le mode d'emploi (et le conserver pour pouvoir le consulter). Pendant la lecture, déplier la page avec les illustrations.	page 11
I	Leggere attentamente le presenti istruzioni per l'uso e le norme di sicurezza. Osservare la figura sui risvolli illustrati.	pagina 16
E	Lea en su totalidad el modo de empleo, conservándolo para consultas posteriores. Para su lectura, abra por la página ilustrada.	pág. 21
P	E favor ler com toda a atenção estas instruções de serviço, assim como as instruções de segurança. Sera conveniente consultarem se as figuras que se encontram nas página ilustrada desdobreveil.	pag. 26
RF	Пожалуйста, тщательно прочитайте эту инструкцию по эксплуатации и обратите особое внимание на правила техники безопасности. Во время чтения этой инструкции обратито внимание на рисунок, изображенный на внутренней стороне сложенной брошюры.	стр. 31

POWER DUO



English

Dear customer,
Thank you for purchasing this appliance and for your confidence in us. Please read the operating instructions carefully and keep them in a safe place.

A

Appliance description

- | | |
|--|--|
| 1 Spray button | 6 Filling inlet (with push-button opening) |
| 2 Power steam button/
Pro Vertical button | 7 Spray nozzle |
| 3 Variable steam control | 8 Mains supply cord |
| 4 Thermostat light | 9 Flexible cord support |
| 5 Temperature control dial | 10 Water tank with maximum water level indicator |
| | 11 Stainless steel soleplate |

Safety instructions

- The appliance complies with EU directives 72/23/EEC and 89/336/EEC.
- The appliance may only be connected to alternating current as specified on the rating plate.
- An electrical appliance is not a toy. Use and store the appliance out of reach of children. Do not let the supply cord hang down.
- Do not leave the appliance unattended while it is connected to the mains supply.
- Electrical appliances generate high temperatures. Always use the handles provided and warn other users of the potential dangers (e.g. escaping steam or hot water, especially when ironing vertically).
- Never treat clothing which is being worn.
- Always disconnect the appliance:
 - before filling or emptying the water tank;
 - before leaving the room (even for a short time);
 - after use.
- Never unplug the appliance by tugging on the cord.
- Only safe extension leads should be used.
- Do not immerse the appliance in water.
- An electrical appliance should not be used if:
 - the appliance, the supply cord or the cord protector is damaged;
 - the appliance has been dropped;
 - the appliance is obviously leaking. In this case the appliance should be returned to an approved Rowenta Service Dealer for repair. (See enclosed list for addresses.)
- Repairs to electrical appliances may only be carried out by specialists. Improperly carried out repairs can cause serious danger to users. To avoid danger to users, a defective or damaged supply cord may only be replaced by an authorised Rowenta service centre.
- This product has been designed for domestic use only. Any commercial use, inappropriate use or failure to comply with the Instructions, the manufacturer accepts no responsibility and the guarantee will not apply.
- When the appliance has reached the end of its operational life it should be disposed of through the correct channels.

B Before use



BEFORE DOING ANYTHING ELSE, REMOVE THE SOLE-PLATE PROTECTOR

Before using the iron for the first time:

Heat the appliance at the maximum setting without water (see section D). A little smoke and a slight smell may be emitted, but this is only temporary.

The water tank can then be filled directly with tap water using a jug (see section C).

Each time you begin ironing, allow the iron to emit steam for at least 1 minute. During this time press the powersteam button (2) from time to time to release several bursts of steam. Any particles released through the soleplate during first use are harmless and are due to the newness of your iron.

C Filling the water tank



Before filling the water tank, unplug from the mains and set the steam control to position ☞.

Tilt the iron. The filler inlet can easily be opened by pressing the push button. The inlet will open with a "click". Pour in the water up to the Max. (10) mark. Close the filler inlet by pressing the push-button again, before returning the iron to the horizontal.

What water may be used?

Your iron has been designed to operate using tap water. However, if your water is very hard, you can mix it 50 % tap water with 50 % distilled or demineralised water.



Do not add anything to the contents of the water tank and do not use water from clothes dryers, scented or softened water, water from refrigerators, batteries or air conditioners, pure distilled water or rain water. These contain organic waste or mineral elements that become concentrated when heated and cause spitting, brown staining or premature wear to your iron.



Tip: Spray starch onto the reverse side of the fabric to be ironed.

D Setting the temperature

Ironing label	Fabric	Temperature control
	Synthetic fibres e.g. viscose, polyester	●
	silk, wool	● ●
	cotton, linen	● ● ●

Using the temperature control (5), set the iron temperature to suit the type of material. We recommend using the above table as a guide. The thermostat light indicates that the soleplate is heating up. When the light (4) goes out, the required temperature has been reached.



Please note: When heating up the iron from cold, wait until the warning light has gone out a second time. Only then is the set temperature reached.

Tip: We recommend that you start with fabrics to be ironed at a low temperature as the iron takes longer to cool down than to heat up. For mixed fabrics set the temperature for the most delicate fabrics.

E Ironing and Steam functions

E1 Dry ironing

To iron without continuous steam, turn the steam control (3) to ☞ and set the temperature to suit the type of material (care points *, **, ***).

E2 Steam ironing

You can steam iron from temperature setting ** up. The steam quantity can be set to between ☞ (minimum steam quantity) and ☞ (maximum steam). We recommend setting to maximum steam quantity only when the iron is set at temperature setting ***.

E3 Pro Vertical (vertical steam ironing to be used at maximum steam setting)

Ideal for removing creases from suits, jackets, skirts, hanging curtains etc..



Important: Never steam or iron clothing that is being worn!

- Hang up the garment on a hanger and hold the fabric slightly taut with one hand.
- Set the thermostat control to maximum steam.
- Hold the iron a few centimetres away from the garment to avoid burning delicate fabrics.
- Press the power steam button to generate a continuous flow of steam, moving the iron from top to bottom. If the steam flow weakens, it can be maintained by pressing the button again approx. every 3 seconds. We recommend briefly setting the iron down after 1 minute. Before standing the iron on its heel, wait for the steam flow to finish.



Important: Never direct the steam jet at persons or animals

E4 Power steam button (from temperature setting *** up).

To generate a powerful jet of steam and remove stubborn creases, press the power steam button.

E5 Spray function

To dampen stubborn creases, press the spray button (1).

F Additional functions

F 1 Self Clean – prolongs the life of the iron

The self clean function flushes dirt and scale particles out of the steam chamber.

To operate:

- Fill the tank with tap water up to the maximum mark and heat the iron to max. temperature.
- Unplug from the mains.
- Hold iron over a sink horizontally, push the steam control (3) past the ☞ position and into the "Self Clean" position and hold it there: steam will now begin to build up. After a few seconds water and steam will emerge from the soleplate, rinsing dirt and scale particles out of the steam chamber.

- After approx. 1 minute move the steam control slide to the ☞ position.
 - Insert mains plug and allow the iron to heat up again.
 - Wait until the remaining water has evaporated.
 - Unplug from the mains and allow iron to fully cool down.
 - When cool, the soleplate can be wiped with a damp cloth.
- We recommend using the self clean function approx. every 2 weeks. If the water is very hard, the iron should be cleaned weekly.

Valve

The self clean valve prevents the drip hole into the steam chamber from furring or blocking up. To ensure the iron continues to function properly, open and close the valve by sliding the steam control to max then min a few times after use.

F2 Anti-scale system (depending on model)

Your iron contains an anti-scale cartridge to reduce scale deposits. This considerably prolongs the operational life of your iron. The anti-scale cartridge is an integral part of the water tank and does not need to be replaced.



Do not use descaling agents, as these damage the lining of the steam chamber and so may impair the steam function.

F3 Anti-Drip system (depending on model)

If the temperature is set too low, the iron cannot produce steam because of the anti-drip technology which prevents droplets of water leaking from the soleplate.



After ironing

- Unplug from the mains, pour away remaining water and set steam control to ☞. Then allow the appliance to cool down.
- Do not wind the cord round a hot soleplate.
- Store the iron standing on its heel.



Cleaning and maintenance

When cool, the iron and the soleplate can be wiped with a damp cloth.

Do not use corrosive or abrasive cleaning agents or sharp objects to clean the soleplate. Depending on the model, the stainless steel soleplate can be cleaned using a Rowenta Soleplate Cleaning Stick PC05.



Important:

If the appliance has been standing unused for long periods, hold it horizontally and allow it to emit steam for 1 minute to clean the steam ducts and remove any residue from the iron.

Problems?

Problem	Possible cause	Solution
The soleplate does not heat up or the thermostat light does not come on.	No power supply.	Check that the mains plug is properly inserted or try plugging the iron into a different socket.
	The temperature control is on position "0" or set too low Turn the temperature control (D) to the required setting.	Turn the temperature control (D) to the required setting.
Thermostat light goes on and off.	This is normal.	When the warning light goes on and off, the iron is heating up. As soon as the light goes off, the set temperature has been reached.
None or too little steam is being emitted.	The steam control is set on position ☞.	Turn the steam control to the required setting area (E2).
	There is insufficient water in the tank.	Fill the tank (C).
	The Anti-Drip function (F3) is active.	Wait for the soleplate to reach the correct temperature.
Brown streaks come through the holes in the soleplate and stain the fabric.	You are using chemical descaling agents.	You are using chemical descaling agents.
	Your linen is not rinsed sufficiently or you have ironed a new garment before washing it.	Ensure linen is rinsed thoroughly to remove any soap deposits or chemicals on new garments which may be sucked up by the iron.
The soleplate is dirty or brown and can stain the linen.	You are using too high a temperature.	See the temperature table to correctly set the thermostat.
	You are using starch.	Clean the soleplate as indicated in section H. Always spray starch onto the reverse side of the fabric to be ironed.
The soleplate is scratched or damaged.	You have placed your iron flat on a metallic rest-plate.	Always set the iron on its heel.
	You have ironed over a zip.	Try to avoid ironing over zips which may have rough edges.

If you are unable to trace the cause of the fault, contact an official Rowenta Customers Service Centre. The addresses are shown in the enclosed service centre address list.

Further hints and tips are obtainable from our homepage: www.rowenta.com